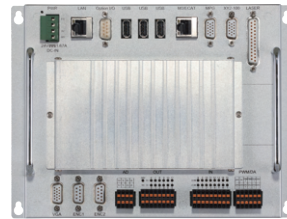
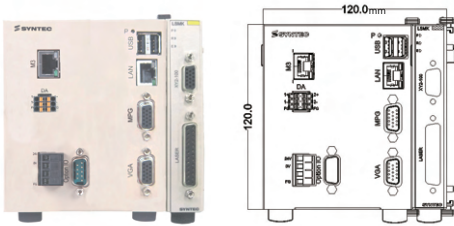




## 710SA Controller

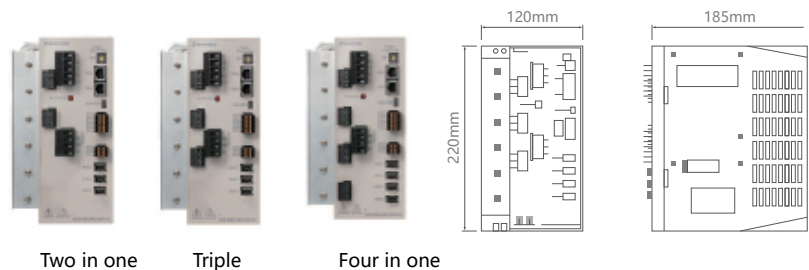
## 720SA Controller



Specification	710SA	720SA
Interface Signals	XY2-100	
Laser Source Interface	25 PIN DSUB	
IO (Std. /Max)	- / 4096I 4096O	16I 12O / 4096I 4096O
Axial Control (Std. /Max)	2 / 5	1 / 5
Servo Interface	M3 / EtherCAT	EtherCAT
DA/AD	2DA	3DA / 4AD
Input Voltage	24V 1A	
USB	2	3
Data Sharing Interface	LAN, USB, RS485	

## Series Servo Driver

1



Specification	SMD-22B	SMD-23B	SMD-24B
Axial Control	2	3	4
Support Encoder Model	Nikon·Tamagawa·Sankyo·Panasonic·Hiwin		
I/O Extension	21 / 20		
Servo Communication	M3 / EtherCAT		
Input Voltage	220V		

## TAIWAN

### Taiwan (Hsinchu)

**SYNTEC Technology Co., Ltd**  
ADD : No.25, Yanfa 2nd Rd., East Dist.,  
Hsinchu City 300, Taiwan (R.O.C.)  
TEL : +886-3-6663553  
FAX : +886-3-6663505  
EMAIL : sales@syntecclub.com.tw

### Taichung

**SUN-CNC Co., Ltd**  
ADD : No. 22, Lane 428, Section 1, Fengyuan  
Boulevard, Fengyuan District  
TEL : +886-4-25337731  
TAX : +886-4-25349224

### TANLU-CNC Co., Ltd

ADD : No. 42, Jingming Road, Xitun District,  
Taichung City, Taiwan (R.O.C.)  
TEL : +886-4-23102626  
TAX : +886-4-23102636

### Tainan

ADD : No. 218, Dendan Road, Rende District,  
Tainan City, Taiwan (R.O.C.)  
TEL : +886-6-2796707  
TAX : +886-6-2796705

## CHINA

### Jiangsu

**SYNTEC TECHNOLOGY(Suzhou)CO.,Ltd**  
ADD : Building B, No.9 Chunhui Road,Suzou Industrial  
Park,China  
TEL : 0512-69008960  
FAX : 0512-66246029

### SYNTEC TECHNOLOGY(Suzhou)CO.,Ltd WuXi Office

ADD : B906, Yuye Network Building, 68 Exploration  
Road, Huishan District, Wuxi City, Jiangsu Province,  
China  
TEL : 15295664580

### SYNTEC TECHNOLOGY(Suzhou)CO.,Ltd Changzhou Office

ADD : Room 2217, Yatal Fortune Center, No. 1  
Huayuan Street, Hutang Town, Wujin District,  
Changzhou City, Jiangsu Province, China  
TEL : 18168828572

### SYNTEC TECHNOLOGY(Suzhou)CO.,Ltd XuZhou Branch

ADD : Room 1503, South of Territorial Sea Office  
Building, No. 66, Kungpeng Road, Xuzhou Economic  
Development Zone, Jiangsu Province, China  
TEL : 13686201020

### SYNTEC TECHNOLOGY(Suzhou)CO.,Ltd NanJingBranch

ADD : Room 712, Research Building 1, Lijiang  
Park, 117 Suyuan Avenue, Jiangning District, Nanjing  
City, Jiangsu Province, China  
TEL : 025-52717702  
FAX : 025-52717710

### SYNTEC TECHNOLOGY(Suzhou)CO.,Ltd NanTong Branch

ADD : Room T3-1301, No. 108, Gangzha District,  
North Street, Nantong City, Jiangsu Province, China  
TEL : 0513-89077025  
FAX : 0513-89072057

### SYNTEC TECHNOLOGY(Suzhou)CO.,Ltd NanTong Branch Yanchen Office

ADD : Room 401, building 13, phase 9, Zhongnan  
Century City, Yandu District, Yancheng City, Jiangsu  
Province  
TEL : 18625235150

### Shaanxi

### SYNTEC TECHNOLOGY(Suzhou)CO.,Ltd XiAn Branch

ADD : Room 1, 1328, Building 4, Yicui Garden I  
Duhui, No. 10, South Tangyan Road, Xi'an  
High-tech Zone  
TEL : 029-88287423

### SYNTEC TECHNOLOGY(Suzhou)CO.,Ltd BaoJi Office

ADD : Room 1702, Unit 3, Building 8, Dongling Xinshiji,  
Binhe North Road, Jintai District, Baoji, Shaanxi  
Province, China

## AROUND THE WORLD

### Malaysia

ADD : No.2, Jalan Astana 1D, Bandar Bukit Raja, 41050  
Klang, Selangor, Malaysia.  
TEL : +603-33115387  
EMAIL : sales.malaysia@syntecclub.com

### Thailand

ADD : 78/38 Kheha Romklao Rd., Khlong Song Ton Nun,  
Lat Krabang,Bangkok, 10520  
TEL : +662-006-5738  
EMAIL : thanawat@syntecclub.com.tw

### Vietnam

ADD : 3F, No. 36, A4 Street, Ward 12, Tan Binh District,  
Ho Chi Minh City, VietNam  
TEL : +84938332829  
FAX : +842822535556  
EMAIL : andyngo@vnsyntec.com.vn

### Turkey

ADD : Kucukbakkalkoy Mah. Vedat Gynoy Cd. Defne Sok.  
No:1 D:1502 Flora Residence,34750 Atasehir/Istanbul, Turkiye  
TEL : +90-216-2662476  
EMAIL : daisy.cheng@syntecclub.com.tw

### USA (South California)

ADD : 2841 Satum St, #D, Brea, CA 92821  
TEL : +1909-551-0187  
EMAIL : info@syntecamerica.com

### Indonesia

**PT. OTOMASI BERSAMA INDONESIA**  
ADD : Ruko Arcadia Mataram Blok B, No 15, Kelurahan  
Cibatu, Kecamatan Cikarang selatan, 17530, Indonesia  
TEL : +6221 2210 4832  
EMAIL : yulius@otomasi.co

### India (Distributor)

**Luna Technologies Pvt. Ltd.**  
ADD : W-200 ,TTC Industrial Estate , Khairme ,  
Thane Belapur Road , Navi Mumbai -400708  
TEL : +91-22- 61786110  
E-mail : sales@lunabearings.com

### Guangdong

**SYNTEC TECHNOLOGY(Suzhou)CO.,Ltd GuangDong  
Branch**  
ADD : Factory 201or 301, Building A, No.10,Nanjiang  
Third Road, Zhuijiang Street, Nansha District, Guangzhou  
City  
TEL : 020-39089367  
FAX : 020-39089791

### SYNTEC TECHNOLOGY(Suzhou)CO.,Ltd DongGuan Branch

ADD : 0769-81661ing 1, Mobile Group, No. 522, Zhen  
'an East Road, Chang 'an Town, Dongguan City,  
Guangdong Province, China  
TEL : 0769-81660318

### SYNTEC TECHNOLOGY(Suzhou)CO.,Ltd GuangZhou Branch

ADD : Room 404, Building 2, Seven Friendship Building,  
No. 8 Luojiajun Section, Fuyi Road, Dalong Street,  
Panyu District, Guangzhou City, Guangdong Province  
TEL : 020-34583040  
FAX : 020-34583220

### SYNTEC TECHNOLOGY(Suzhou)CO.,Ltd ChangPing Branch

ADD : Floor 5, Huilong Building, No. 8, Zhanqian 1st  
Road, Banshi Village, Changping Town, Dongguan City,  
Guangdong Province, China  
TEL : 0769-82826802  
FAX : 0769-82826820

### SYNTEC TECHNOLOGY(Suzhou)CO.,Ltd ShenZhen Branch

ADD : 406, Block E, Haowei new material industrial  
park, No. 8, Qinglan 1st Road, Zhukeng community,  
Longtan street, Pingshan District, Shenzhen,  
Guangdong  
TEL : 0755-84320380  
FAX : 0755-84559490

### SYNTEC TECHNOLOGY(Suzhou)CO.,Ltd JiangMen Branch

ADD : Room 02, 7th Floor, Torch Building, Hi-Tech  
Zone, 288 Jinou Road, Jianghai District, Jiangmen City,  
Guangdong Province - China  
TEL : 0750-3762143

### Henan

### SYNTEC TECHNOLOGY(Suzhou)CO.,Ltd LuoYang Branch

ADD : Room 704, Runsheng Building, Intersection of  
Heluo Road and Sanshan Road, Hi-tech Zone, Luoyang,  
Henan Province, China  
TEL : 0379-65110352  
FAX : 0379-65110352

### SYNTEC TECHNOLOGY(Suzhou)CO.,Ltd ShiJiaZhuang Office

ADD : 4-3-801, Reyl Community, No. 8 Huaxing Road,  
Olaoxi District, Shijiazhuang City, Hebei Province, China  
TEL : 18622728669  
FAX : 0379-65110352

### Fujian

**SYNTEC TECHNOLOGY(Suzhou)CO.,Ltd XiaMen  
Branch**  
ADD : Floor 3, No. 2, Jixiang West Road, Xinmin Town,  
Tong'an District, Xiamen City, Fujian Province  
TEL : 0592-7191904  
FAX : 0592-7220536

### Zhejiang

### SYNTEC TECHNOLOGY(Suzhou)CO.,Ltd HangZhou Branch

ADD : 1202, Unit 2, Building 1, Dikai Building, No.471  
Jincheng Road, Xiaoshan District, Hangzhou City,  
Zhejiang Province, China  
TEL : 0571-82751187

### SYNTEC TECHNOLOGY(Suzhou)CO.,Ltd HangZhou Branch Jinhua Office

ADD : Room G204, No. 1729, Dongshi North Street,  
Xinshi street, Wucheng District, Jinhua City, Zhejiang  
Province  
TEL : 1599-0026533

### SYNTEC TECHNOLOGY(Suzhou)CO.,Ltd WenZhou Branch

ADD : 1205-3, Honghai building, Ouhai District,  
Wenzhou City, Zhejiang Province  
TEL : 0577-86158619

### SYNTEC TECHNOLOGY(Suzhou)CO.,Ltd NingBo Branch

ADD : Room 1207, Ivy league Building, No.262, Lane  
416, Zhaohui Road, Jiangdong District, Ningbo City,  
Zhejiang Province, China  
TEL : 0574-87750305

### SYNTEC TECHNOLOGY(Suzhou)CO.,Ltd WenLing Branch

ADD : Room 509, Haocheng Service Building, No. 838,  
Wanchang Middle Road, Chengdong Street, Wenling  
City, Taizhou City, Zhejiang Province, China  
TEL : 0576-86138372  
FAX : 0576-86119106

### SYNTEC TECHNOLOGY(Suzhou)CO.,Ltd YuHuan Office

ADD : Room 302, Unit 2, Building 1, Hualong Times  
Square, 226 Provincial Road, Chunmen Town, Yuhuan  
County, Taizhou City, Zhejiang Province, China  
TEL : 13088636567

### Chongqing

### SYNTEC TECHNOLOGY(Suzhou)CO.,Ltd ChongQing Branch

ADD : 1007, Building 4, No.62, East Section of Taishan  
Avenue, Yubei District, Chongqing  
TEL : 023-67913296  
FAX : 023-67634382

### SYNTEC TECHNOLOGY(Suzhou)CO.,Ltd ChengDu Office

ADD : ADD : Room102, Unit 1, Building 24, Jiachaoye  
Modern City, No.898, Section 2, Xingxing Road,  
Dongsheng Street, Shuangliu District, Chengdu City,  
Sichuan Province, China  
TEL : 18302866229



SYNTEC Technology Co., Ltd.  
No.25, Yanfa 2nd Rd., East Dist.,  
Hsinchu City 300, Taiwan (R.O.C.)

886-3-6663553

886-3-6663505

sales@syntecclub.com.tw

Suzhou SYNTEC Equipment Co.,Ltd.  
No. 9th, Chun Hui Road, Suzhou  
Industrial Park, Jiangsu Province

86-512-69008860

86-512-65246029

service@syntecclub.com.cn



<http://www.syntecclub.com.tw>

Copyright © SYNTEC Technologies Corp.

©2023.05\_rev.2 (PRINTED IN TAIWAN)

\*SYNTEC reserves the right to revise catalog information at any time without notice due to typographical errors or any errors.



 **SYNTEC**

**SYNTEC LASER  
MARKING  
CONTROLLER**

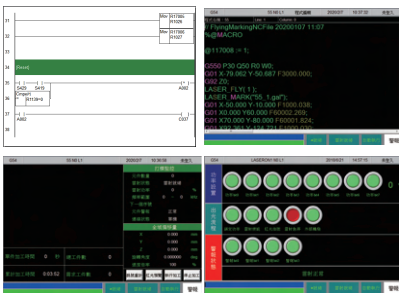
# Laser Marking System



## Software Feature

### 01 Automation Application

- Offer secondary development tool. Create brand features.
- Built-in PLC, suitable for automation applications.



### 02 Marking without PC

- Suitable for production line.



### 03 Motion Control Expert

- Easily integrates axial control base on CNC motion.



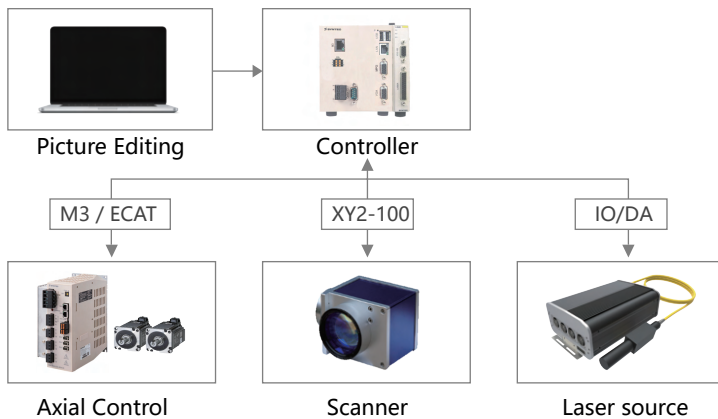
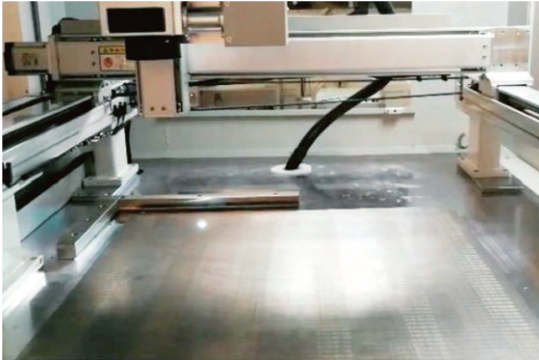
### 04 Easy Connect

- Connect with other device, such as robot and vision.
- Offer cloud service.



# Large Area Synchronous Laser Marking

Laser marking system could expand working area through synchronously controlling scanner and mechanical axes when workpiece is larger than scan area.

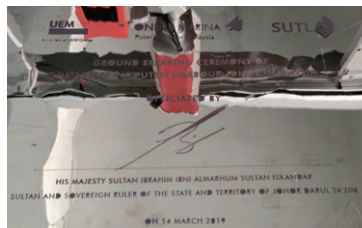


- Marking region is unlimited because of synchronous control axes and galvo scanner. Solve large area marking problem.
- Provide laser energy control function. Solve large laser energy at corner, start point and end point.
- Offer connection blur function, lower difficulties to adjust stitching errors.
- Offer total solution by combining motion, galvo scanner and laser control.

## Garnish Trim



## Metal Nameplate



## Metal Trim / Elevator Doors



## Glass Film Remover



## Fabric Cutting



## Ruler





# Automatic Applications

- Customization- Offer specialized layout and process.
- Vision- Positioning and scanning code.
- Expandable- Support axial controlling, IO module.
- Built-in PLC- Reduce cost.
- Communication- Connect with other device and upload information to cloud.

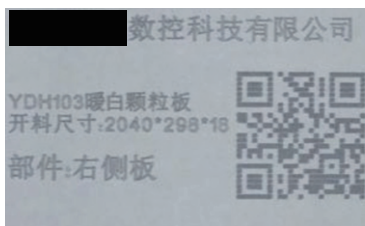


## Motor Rotor Auto Serial Number

- Stable and make information steam!
- Total solution: mark+barcode read and check+report
- Specialized interface, fool-proof design



## Board Laser Marking



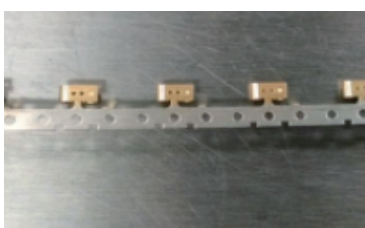
## Wire Marking



## Flying Marking



## Metal Removal



## Rotation marking



## Glass Drilling

