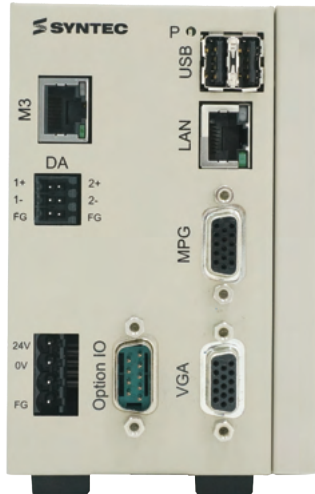
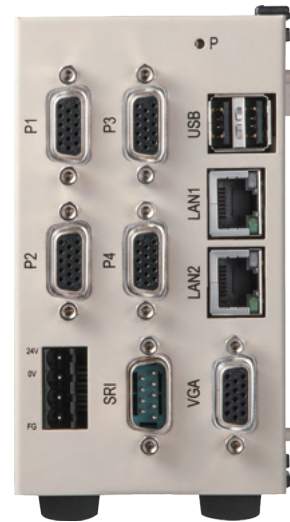




Specification



**High-end
Serial Solution**



**Economical
Pulse Solution**

System	FC-B
Monitor	VGA
USB	2
Network	10/100 Mbps
Communication Protocol	RS485, Modbus TCP, EtherNet/IP
Servo Control	MECHATROLINK-III /EtherCAT/RTEX
Control Axes	Standard 4 axes (max.18 Axes)
External Interface	RJ-45, USB, DSUB, MPG
I/O bit	Up to 4096 points
Input Voltage	DC24V 1A

System	FC-A
Monitor	VGA
USB	2
Network	10/100 Mbps
Communication Protocol	RS485, Modbus TCP, EtherNet/IP
Servo Control	Pulse
Control Axes	Standard 4 axes
External Interface	RJ-45, USB, DSUB, MPG
I/O bit	Up to 4096 points
Input Voltage	DC24V 1A

TAIWAN

Hsinchu(Headquarter)

SYNTEC Technology Co., Ltd
ADD : No.25, Yanfa 2nd Rd., East Dist.,
Hsinchu City 300, Taiwan (R.O.C.)
TEL : +886-3-6663553
FAX : +886-3-6663505
E-mail: sales@syntecclub.com.tw

Taichung(distributor)

SUN-CNC Co., Ltd
TEL: +886-4-25337731
TAX: +886-4-25349224

SYNTEC TECHNOLOGY CO., LTD. (Taichung Office)

ADD:No. 2, Jingke 3rd Rd., Nantun Dist., Taichung
City 408, Taiwan (R.O.C.)
TEL: +886-4-23550621
E-mail: yeon@syntecclub.com.tw

Tainan(distributor)

HUNG LUN Technology Co., Ltd
ADD: No. 218, Denan Rd., Rende Dist., Tainan City
717, Taiwan (R.O.C.)
TEL: +886-6-2796707
TAX: +886-6-2796705

Kaohsiung(distributor)

ADD : Rm. 1302, No.2-1, Zhuoyue Rd., Nanzi Dist.,
Kaohsiung City 811, Taiwan (R.O.C.)
TEL : +886-7-6011000#7808
E-mail : haoyu.hsieh@syntecclub.com.tw

Shaanxi

Xi'an SYNTEC of CNC Equipment Co., Ltd. (XAST)
ADD : Room 11328, Unit 1, Building 4, Duhui, I,
Yicuiyuan, No. 10, Tangyan South Road, Gaoxin
District, Xian City
TEL : 029-88287423
FAX : 029-88287423

Changping

SYNTEC TECHNOLOGY (Suzhou) Co., Ltd. Changping
Branch
ADD : Floor 5, Huilong Building, No. 8, Qianyi Road,
Banshi Village, Changping Town, Dongwan City
TEL : 0769-82826802
FAX : 0769-82826820

Dongguan SYNTEC TECHNOLOGY (Suzhou) Co., Ltd.
Dongguan Branch
ADD : Zone B, 3F, Building1 No.522,Chain-An East Rd.,
Changan Townmap
TEL : 0769-81660318
FAX : 0769-81660328

Guangdong Guangzhou SYNTEC TECHNOLOGY (Suzhou)
Co., Ltd. Guangzhou Branch
ADD : 2T1404, Zhiqi, No. 8, Luojia Village Section, Fuyi
Road, Dalong Street, Panyu District, Guangzhou City
TEL : 020-34583040
FAX : 020-34583220

Changping
Changping SYNTEC TECHNOLOGY (Suzhou) Co., Ltd.
Changping Branch
ADD : Floor 5, Huilong Building, No. 8, Qianyi Road,
Banshi Village, Changping Town, Dongwan City
TEL : 0769-82826802
FAX : 0769-82826820

Shenzhen SYNTEC of CNC Equipment Co., Ltd. (SCST)
ADD : 5F, Building C, Sunshine Technology Park,
Gin-Long 2nd Rd., Baolong Industrial Zone, Shenzhen
Longgang District
TEL : 0755-84320380
FAX : 0755-84559490

Hsinchu(Headquarters)

SYNTEC Technology Co.,Ltd.

No.25, Yanfa 2nd Rd., East Dist.,
Hsinchu City 300, Taiwan

☎ 886-3-6663553

☎ 886-3-6663505

✉ sales@syntecclub.com.tw

AROUND THE WORLD

Malaysia

MYSYNTEC TECHNOLOGY SDN BHD
ADD : 43, Ground Floor, Jalan Tpp1/1, Taman
Perindustrian Puchong, 47100, Selangor Darul Ehsan.
TEL : +603-8066 2183
E-mail : otis.siah@syntecclub.com.tw

Thailand

SYNTEC Thailand Office
ADD : 78/38 Kheha Romkiao Rd.,
Khlong Song Ton Nun, Lat Krabang,Bangkok, 10520
TEL : +662-006-5738
FAX : +66 2 0865738
E-mail : thanawat@syntecclub.com.tw

Vietnam

VNSYNTEC TECHNOLOGY CO., LTD
ADD : 3F, No. 36, A4 Street, Ward 12, Tan Binh District,
Ho Chi Minh City, VietNam
TEL : +84 938332829
TAX : +84 282 253 5556
E-mail : andyngo@syntecclub.com.tw

Turkey

SYNTEC Turkey Office
ADD : Küçükbakkalkoy Mah. Vedat Günyol Cd.
Defne Sok. No:1 D:1502 Flora Residence,
34750 Atasehir/Istanbul, Türkiye
TEL : +90-216-2662475
E-mail : info@syntec-turkey.com

USA (South California)

SYNTEC USA Office
ADD : 766 Pinefalls Ave.Walnut,CA 91789
TEL : +1 909-551-0187
E-mail : info@syntecamerica.com

Indonesia(distributor)

PT. OTOMASI BERSAMA INDONESIA
ADD : Ruko Arcadia Mataram Blok B, No 15, Kelurahan
Cibatu, Kecamatan Cikarang selatan, 17530, Indonesia
TEL : +6221 2210 4832/ +6281285886246
E-mail : yulius@otomasi.co

JiangmenSYNTEC TECHNOLOGY (Suzhou) Co., Ltd.

Jiangmen Branch
ADD : Room 02, Floor 7, Huoju Building, Gaoxin
District, No. 288, Jinou Road, Jianghai District,
Jiangmen City, Guangdong Province
TEL : 0750-3762143
FAX : 0750-3771824

Fujian-Xiamen

SYNTEC TECHNOLOGY (Suzhou) Co., Ltd. Xiamen
Branch
ADD : No. 100,B Chuang Chang Fang 3F East,Jin Fu
Road,Tong An District,Xiamen City, Fujian Province,
China
TEL : +86-592-7191901
FAX : +86-592-7220536

Zhejiang Hangzhou

SYNTEC TECHNOLOGY (Suzhou) Co., Ltd. Hangzhou
Branch
ADD : Room1202 Unit2 Buiding1, Edifice DiKai,
Jincheng Road, Beigan Street,Xiaoshan District,
Hangzhou City,Zhejiang Province, China
TEL : 0571-82751187
FAX : 0571-82751186

SYNTEC TECHNOLOGY (Suzhou) Co., Ltd. Ningbo
Branch
ADD : 1207, No. 262, 416 Alley, Chaohui Road,
Jiangdong District, Ningbo City
TEL : 0574-87750305
FAX : 0574-87750306

SYNTEC TECHNOLOGY (Suzhou) Co., Ltd. Wenling
Branch
ADD : Room 1206, Department A, Zhenxing Plaza,
Taiping Subdistrict, Wenling City
TEL : 0576- 86138372
FAX : 0576-86119106

Jiangsu(Headquarters)

Suzhou SYNTEC Equipment Co.,Ltd.

Building B, No.9 Chunhui Road,Suzou
Industrial Park,China

☎ 86-512-69008860

☎ 86-512-65246029

✉ service@syntecclub.com.cn

India (Distributor)

LUNA BEARINGS
ADD : W-200, TTC Industrial Estate , Khairne,
Thane Belapur Road , Navi Mumbai -400708
TEL : +91-22- 61786110
E-mail : sales@lunabearings.com

CHINA

Jiangsu

SuZhou SYNTEC TECHNOLOGY (Suzhou) Co., Ltd.
ADD : Building C, No.9 Chunhui Road,Suzou Industrial
Park,China
TEL : 0512-69008860
FAX : 0512-65246029
E-mail: service@syntecclub.com.cn

Suzhou Huaxin of CNC Equipment Co., Ltd.(SZHX)
ADD : Building C, No.9 Chunhui Road,Suzou Industrial
Park,China
TEL : 0512-69008828
FAX : 0512-69560818

SYNTEC TECHNOLOGY (Suzhou) Co., Ltd. Jiangmen
Branch

ADD : Room 02, Floor 7, Huoju Building, Gaoxin
District, No. 288, Jinou Road, Jianghai District,
Jiangmen City, Guangdong Province
TEL : 0750-3762143
FAX : 0750-3771824

Jiangsu-Nanjing SYNTEC TECHNOLOGY (Suzhou) Co.,

Ltd. Nanjing Branch
ADD : Room 104, Unit 2, Building 6, Jiulonghu Villa,
No. 188, Qingshuiting West Road, Jiangning District,
Nanjing City
TEL : 025-52717702

Anhui Hefei

SYNTEC TECHNOLOGY (Suzhou) Co., Ltd. Hefei Branch
ADD : Hefei Binhu Baohu District Century City Fu Hui
Yuan T4-2202
TEL : 0551-63814183
FAX : 0551-63814183

Luoyang

Luoyang SYNTEC of CNC Equipment Co., Ltd. (LYST)
ADD : 706, Runsheng Building, Junction Of Heluo Road
And Sanshan Road, Gaoxinjishu Development Area,
Luoyang City
TEL : 0379-65110352
FAX : 0379-65110352

Chongqing

SYNTEC TECHNOLOGY (Suzhou) Co., Ltd. Chongqing Branch
ADD : 11-6, Building 2, No. 62, Taishan Boulevard East
Section, Bu New District, Chongqing City
TEL : 023-67913296
FAX : 023-67634382

Tianjin

SYNTEC TECHNOLOGY (Suzhou) Co., Ltd. Tianjin Branch
ADD : No. 37, A District, Huayuan, Qiaoruifeng, No. 7,
Waihuan West Road, Xiqing District, Tianjin City
TEL : 022-23739192

Shandong Jinan

SYNTEC TECHNOLOGY (Suzhou) Co., Ltd. Jinan Branch
ADD : Room 101, Unit 3, Building 9, Kangqiao, Luneng,
No. 28, Sankongqiao Street, Tianqiao District, Jinan
TEL : 0531-85907208
FAX : 0531-85905708

Hubei

Wuhan SYNTEC of CNC Equipment Co., Ltd. (WHST)
ADD : Room 2003-2006, A Guanggogooji,
No.456,Luoyu East Road, Hongshan District , Wuhan,
China
TEL : 027-87638876
FAX : 027-87204137

Liaoning

Shenyang SYNTEC of CNC Equipment Co., Ltd. (SYST)
ADD : C61-2-1, Diyicheng, No. 1, 1Jia1, Qigong
Street, Tiexi District, Shenyang City, Liaoning
Province
TEL : 18698806526

SYNTEC
新代科技股份有限公司



<http://www.syntecclub.com.tw>

Copyright © 2012 Syntec Inc. All rights reserved

Catalog Number : 202005V1

**SYNTEC LASER
WELDING
CONTROLLER**

TRUSTED TECHNICAL SERVICE



Product structure

MES



 OPCUA

Controller




Expansion Module



FC - B



eHMC

 MECHATROLINK-III /EtherCAT/RTEX

 EtherNet/IP, Modbus TCP

Servo



SYNTEC/Panasonic /Yaskawa drive



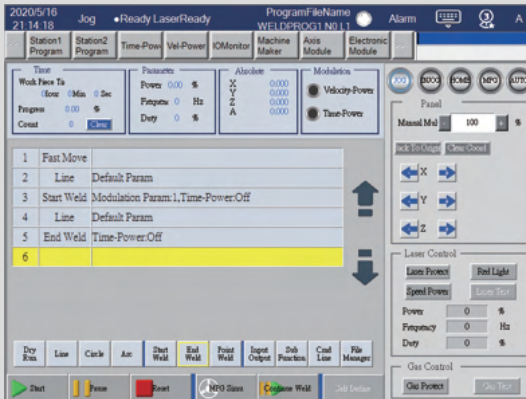
Servo/Stepping motors

Sensor



Vision/Seam Tracking Sensor

= Software features

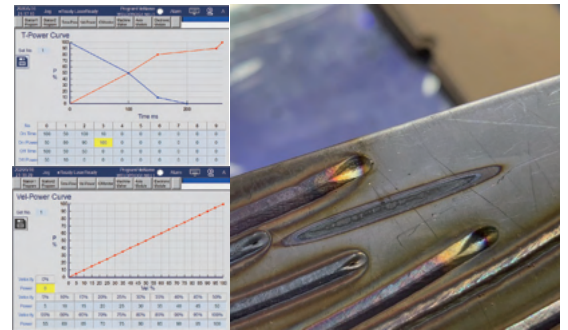


Graphical program editing screen

- No need to remember the CNC language to complete the programming.

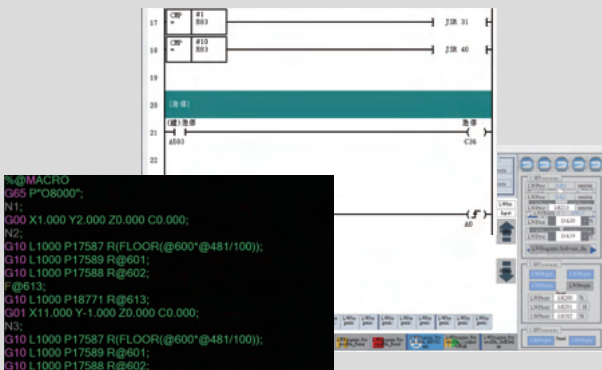
Built-in laser process database

- Built-in laser modulation function which can real-time control power, frequency and duty of laser, effectively improve the quality of laser welding process.
- Provide process database, corresponding parameters can be called in real time according to different materials.
- Provide standard laser source control interface, compatible with mainstream laser brands.



Support customized development

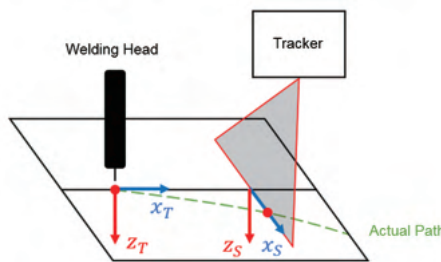
- Provide secondary development tools to develop value-added functions without coding and protect industry-specific process knowledge. In-depth customization for different customers.



= Applications

Support multiple structures

- SYNTEC laser welding controller can support different machine which have different mechanical configuration.
- Multi-station application value-added, saving feeding time, double the processing efficiency of the machine.

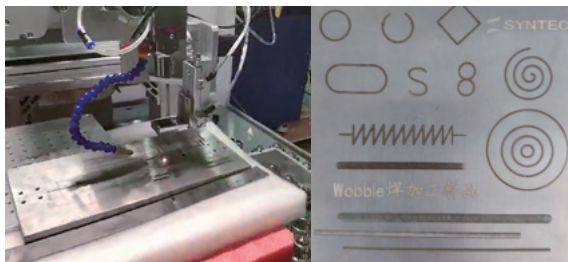


Seam tracking control

- Support welding seam tracking function, can compensate for displacement deviation caused by thermal deformation, workpiece incoming and clamping error.
- Support three to five-axis machine, six-joint articulate robot.

RTCP surface speed control

- Integrating optional RTCP function with laser control to achieve even speed welding and complex process effect.



Wobble welding

- Single controller provides wobble welding to overcome workpiece tolerance, improve welding quality and strength.